



## 90° Glass Connector, with Square Ends

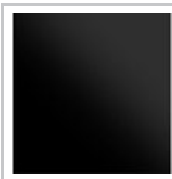
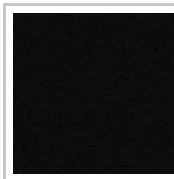
### Safety Glass Thickness

 13/32 to 15/32  
in\*

 15/32 to 19/32  
in\*

 21/32 to 27/32  
in\*

### Finish



### Width

15/16 in\*

1 11/32 in\*

1 9/16 in\*

### Length

2 9/16 in\*

3 7/32 in\*

3 15/32 in\*

## DESCRIPTION

### Corner connector for glass mounting

Fixed bracket to connect two glass panels in a corner.  
Forms a 90° right angle.

## ADVANTAGES AND BENEFITS

Provides a clear and open view free of visual obstructions. Suitable for various glass types and thicknesses

## AVAILABLE PRODUCTS

Product #	Safety Glass Thickness	Finish	Width	Length
<b>SSPFEB90GB</b>	13/32 to 15/32 in*	Graphite Black	15/16 in*	2 9/16 in*
<b>SSPFEB90MB</b>	13/32 to 15/32 in*	Matte Black	15/16 in*	2 9/16 in*
<b>SSPFEB90S</b>	13/32 to 15/32 in*	Satin Stainless Steel	15/16 in*	2 9/16 in*
<b>SSPFEB901</b>	15/32 to 19/32 in*	Satin Stainless Steel	1 11/32 in*	3 7/32 in*
<b>SSPFEB902</b>	21/32 to 27/32 in*	Satin Stainless Steel	1 9/16 in*	3 15/32 in*

---

## TECHNICAL SPECIFICATIONS

Type of Mounting	Glass Mount
Height	31/32 in*
Material	Stainless Steel: Duplex 2205
Glass Drilling	Not Required
Recommended Location Usage	Interior, Exterior, Coastal
Category	Glass Connectors

### Disclaimer

Measures shown with an asterisk (\*) have been converted as per your preference. These are not the official measures. To view the measures specified by the manufacturer, [click here](#).

## APPLICATION

Fits perfectly with glass railing projects such as staircases and balusters.

## IMPORTANT INFORMATION

For safety purposes, use tempered glass. This illustration is provided for visual reference only. Actual product may vary. The manufacturer reserves the right to change product and information without notice. Always follow the instructions inside the package. Installation must always be done by qualified personnel.

## DISCLAIMER

The preceding information, as well as any technical recommendation given in writing or verbally, whether based on tests or not, is provided to the best of our knowledge. Recommendations are non-binding and do not diminish your responsibility for determining the correctness of these recommendations and the suitability of the product for your particular purpose. The application, use or processing of our products, as well as the execution of projects based on our technical recommendations are beyond our control and therefore exclusively your responsibility. Sales of our products are subject to our most recent General Sales and Delivery Conditions. Please note that Richelieu will not accept any returns or claims for unpackaged products.

## PRODUCT PHOTOS

---

