



180° Glass Connector, with Square Ends

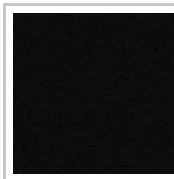
Safety Glass Thickness

13/32 to 15/32
in*

15/32 to 19/32
in*

21/32 to 27/32
in*

Finish



Height

15/16 in*

1 11/32 in*

1 9/16 in*

Length

3 19/32 in*

4 1/16 in*

DESCRIPTION

Fixed straight connector for glass mounting

Fixed bracket to connect two glass panels in a straight line.

ADVANTAGES AND BENEFITS

Provides a clear and open view free of visual obstructions. Suitable for various glass types and thicknesses.

AVAILABLE PRODUCTS

Product #	Safety Glass Thickness	Finish	Height	Length
SSPFEB180GB	13/32 to 15/32 in*	Graphite Black	15/16 in*	3 19/32 in*
SSPFEB180S	13/32 to 15/32 in*	Satin Stainless Steel	15/16 in*	3 19/32 in*
SSPFEB1801	15/32 to 19/32 in*	Satin Stainless Steel	1 11/32 in*	4 1/16 in*
SSPFEB1802	21/32 to 27/32 in*	Satin Stainless Steel	1 9/16 in*	4 1/16 in*

TECHNICAL SPECIFICATIONS

Type of Mounting	Glass Mount
Width	31/32 in*
Material	Stainless Steel: Duplex 2205
Glass Drilling	Not Required
Recommended Location Usage	Interior, Exterior, Coastal
Category	Glass Connectors

Disclaimer

Measures shown with an asterisk (*) have been converted as per your preference. These are not the official measures. To view the measures specified by the manufacturer, [click here](#).

APPLICATION

Fits perfectly with glass railing projects such as staircases and balusters.

IMPORTANT INFORMATION

For safety purposes, use tempered glass. This illustration is provided for visual reference only. Actual product may vary. The manufacturer reserves the right to change product and information without notice. Always follow the instructions inside the package. Installation must always be done by qualified personnel.

DISCLAIMER

The preceding information, as well as any technical recommendation given in writing or verbally, whether based on tests or not, is provided to the best of our knowledge. Recommendations are non-binding and do not diminish your responsibility for determining the correctness of these recommendations and the suitability of the product for your particular purpose. The application, use or processing of our products, as well as the execution of projects based on our technical recommendations are beyond our control and therefore exclusively your responsibility. Sales of our products are subject to our most recent General Sales and Delivery Conditions. Please note that Richelieu will not accept any returns or claims for unpackaged products.

PRODUCT PHOTOS

