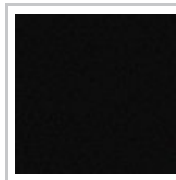




Round Glass Mount Fixed Bracket

Finish



Safety Glass Thickness

 13/32 to 31/32
in*

 15/32 to 31/32
in*

Mounting Plate

1 1/2 in

2 in

2 9/32 in

Arm Size

1/2 in

9/16 in

DESCRIPTION

Fixed bracket

Stainless steel bracket, designed to support a handrail from a glass panel.
 Can be installed with either round or flat surface handrails by choosing the appropriate saddle (sold separately).
 The screws to install the saddle are included with the bracket.

ADVANTAGES AND BENEFITS

- M8 fastener included

AVAILABLE PRODUCTS

Product #	Finish	Safety Glass Thickness	Mounting Plate	Arm Size
SSGF11GM16GB	Graphite Black	13/32 to 31/32 in*	2 9/32 in	1/2 in
SSGF10GX16S	Stainless Steel	13/32 to 31/32 in*	2 in	9/16 in
SSGF11GM16S	Stainless Steel	13/32 to 31/32 in*	2 9/32 in	1/2 in
SSGF11GM17S	Stainless Steel	15/32 to 31/32 in*	1 1/2 in	1/2 in
SSGF11GM18S	Stainless Steel	15/32 to 31/32 in*	2 in	1/2 in

TECHNICAL SPECIFICATIONS

Type of Mounting	Glass Mount
Recommended Location Usage	Interior, Exterior
Adjustment	Fixed Position
Projection	3 1/8 in
Material	Stainless Steel 316
Glass Drilling	Required
Saddle	Sold Separately
Category	Brackets
Thread Type	M8
Milling Diameter	5/8 to 3/4 in

Disclaimer

Measures shown with an asterisk (*) have been converted as per your preference. These are not the official measures. To view the measures specified by the manufacturer, [click here](#).

IMPORTANT INFORMATION

For safety purposes, use tempered glass. This illustration is provided for visual reference only. Actual product may differ from the illustration. Order hardware before starting the job. The manufacturer reserves the right to change product and information without notice. Always use the instructions inside the package. Always set the product in a suitable material. Maintenance: clean with a soft cloth and non-abrasive soap or ammonia. Drawings and technical documents contain examples of hardware from different manufacturers. The customer may in no case make a claim following the use of these documents. The Company disclaims any responsibility for the structural details related to a construction or project. Installation must be done by qualified personnel. Always make sure that the product is properly installed using suitable fixings to the support material.

DISCLAIMER

The preceding information as well as any technical recommendation given in writing, verbally or based on tests is provided to the best of our knowledge. However, recommendations are non-binding and do not diminish your responsibility for determining the correctness of these recommendations and the suitability of the product for your particular purpose. The application, use or processing of our products as well as the production of products based on our technical recommendations are beyond our control and therefore exclusively your responsibility. Sales of our products are subject to our most recent General Sales and Delivery Conditions. Please note that Richelieu will not accept any returns or claims for unpackaged products.

PRODUCT PHOTOS

